

(Customer Connections) Markings On Terminal Block For Reference Only.

Wire Range: 18-12 AWG.
Torque : 10 IN-LBS (1.1 Nm)

208/240 Rated Voltage, 600 Max Voltage, High Z, Impedance.

Part Number	Horsepower (HP)	Motor Amps (A)	Maximum Amps (A)	Inductance (uH)	Weight (LBS)	Losses (W)
KDRULA54H	1/2	2.4	3	7040	4	14
KDRULA53H	3/4	3.5	5	4900	4	17
KDRULA25H	1	4.6	5	3750	4	24
KDRULA27H	1 1/2	6.6	7.5	2750	4	31
KDRULA26H	2	7.5	10	2310	4	31
KDRULA28H	3	10.6	11	1570	4	43

208/240 Rated Voltage, 600 Max Voltage, Low Z, Impedance.

Part Number	Horsepower (HP)	Motor Amps (A)	Maximum Amps (A)	Inductance (uH)	Weight (LBS)	Losses (W)
KDRULA54L	1/2	2.4	3	4200	4	7
KDRULA53L	3/4	3.5	4.2	3000	4	12
KDRULA25L	1	4.6	5.5	2460	4	11
KDRULA26L	1 1/2	6.6	8	1650	4	18
KDRULA27L	2	7.5	10	1350	4	21
KDRULA28L	3	10.6	12	971	4	29

480 Rated Voltage, 600 Max Voltage, High Z, Impedance.

Part Number	Horsepower (HP)	Motor Amps (A)	Maximum Amps (A)	Inductance (uH)	Weight (LBS)	Losses (W)
KDRULA6H	1/2	1.1	1.5	28400	4	9
KDRULA7H	3/4	1.6	1.6	19525	4	15
KDRULA8H	1	2.1	2.1	14878	4	12
KDRULA9H	1 1/2	3	3	10414	4	23
KDRULA1H	2	3.4	4	10300	4	33
KDRULA2H	3	4.8	6	7290	4	38
KDRULA3H	5	7.6	8	3980	4	80
KDRULA4H	7 1/2	11	12	3000	5	77
KDRULA5H	10	14	14	2232	5	111

480 Rated Voltage, 600 Max Voltage, Low Z, Impedance.

Part Number	Horsepower (HP)	Motor Amps (A)	Maximum Amps (A)	Inductance (uH)	Weight (LBS)	Losses (W)
KDRULA6L	1/2	1.1	1.5	16300	4	5.6
KDRULA7L	3/4	1.6	1.6	11716	4	10
KDRULA8L	1	2.1	2.1	8927	4	10
KDRULA9L	1 1/2	3	3	6248	4	17
KDRULA1L	2	3.4	6.4	5790	4	19
KDRULA2L	3	4.8	6	4270	4	23
KDRULA3L	5	7.6	9.6	2770	4	49
KDRULA4L	7 1/2	11	14	1680	4	40
KDRULA5L	10	14	14	1290	5	64

575 Rated Voltage, 600 Max Voltage, High Z, Impedance.

Part Number	Horsepower (HP)	Motor Amps (A)	Maximum Amps (A)	Inductance (uH)	Weight (LBS)	Losses (W)
KDRULA55H	1/2	0.9	1.5	51900	4	8
KDRULA52H	3/4	1.3	1.6	37100	4	13
KDRULA50H	1	1.7	2.1	29400	4	17
KDRULA51H	1 1/2	2.4	2.8	20600	4	26
KDRULA43H	2	2.7	3.2	17900	4	23
KDRULA44H	3	3.9	5	12000	4	34
KDRULA45H	5	6.1	7.5	7580	4	47

575 Rated Voltage, 600 Max Voltage, Low Z, Impedance.

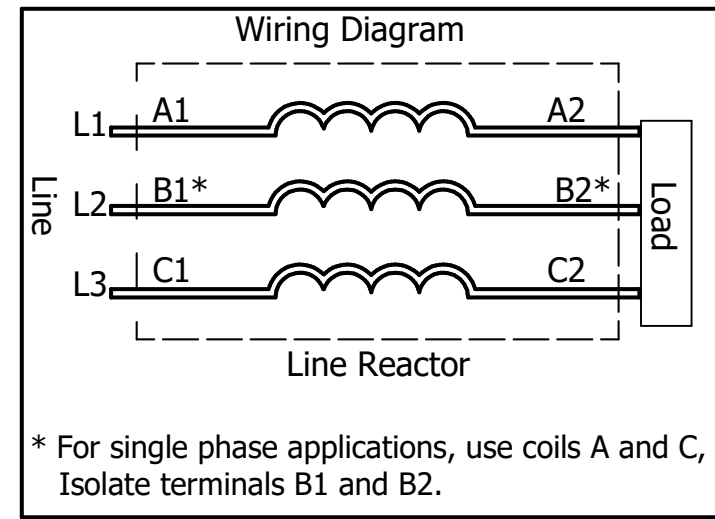
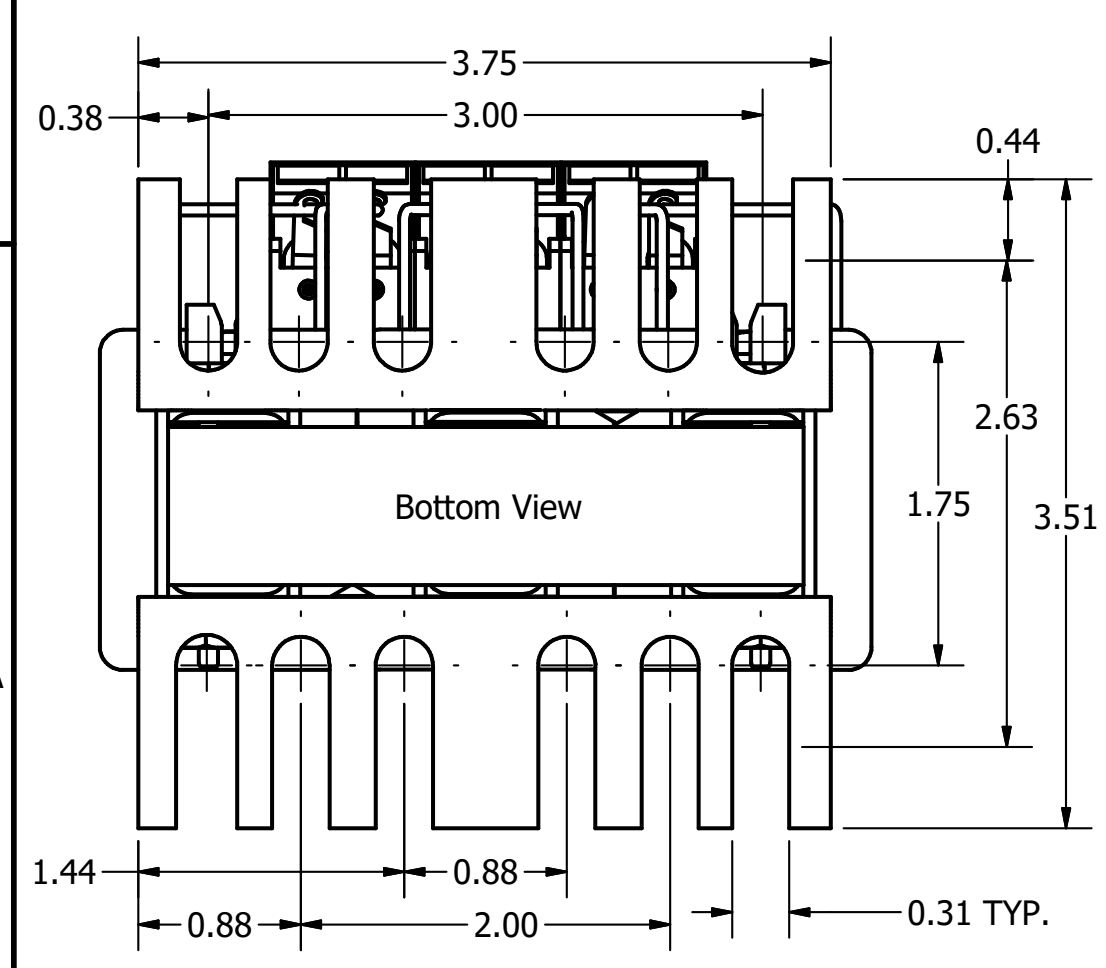
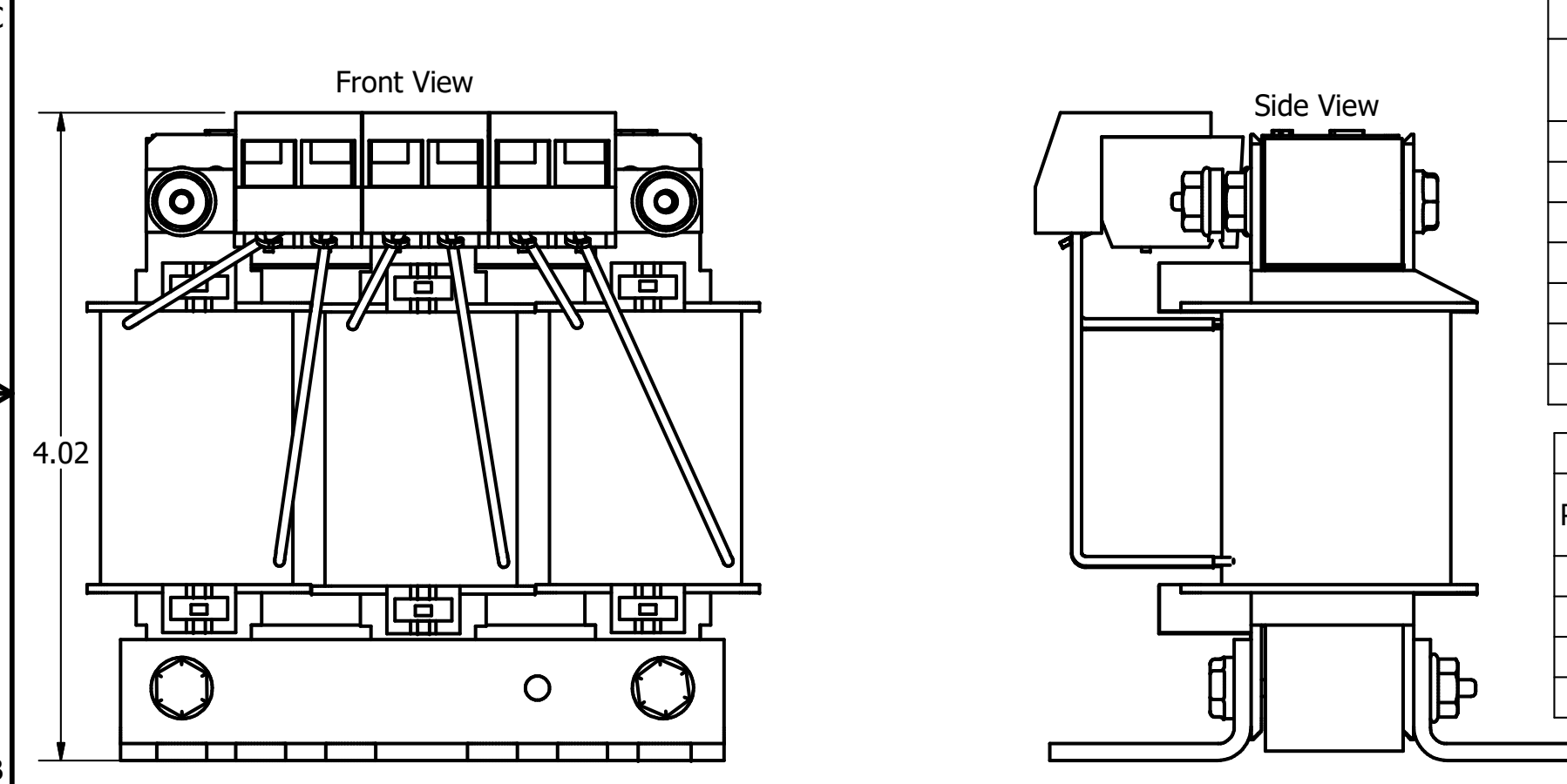
Part Number	Horsepower (HP)	Motor Amps (A)	Maximum Amps (A)	Inductance (uH)	Weight (LBS)	Losses (W)
KDRULA55L	1/2	0.9	1.5	30300	4	6
KDRULA56L	3/4	1.3	2.1	21200	4	9.3
KDRULA50L	1	1.7	2.1	15900	4	12
KDRULA51L	1 1/2	2.4	2.8	10200	4	19
KDRULA46L	2	2.7	3.3	9290	4	22
KDRULA52L	3	3.9	5	6740	4	23
KDRULA47L	5	6.1	7	4510	4	35
KDRULA48L	7 1/2	9	10.4	3100	4	43
KDRULA49L	10	11	11	2470	5	44

480 Rated Voltage, 600 Max Voltage, Output

Part Number	Horsepower (HP)	Motor Amps (A)	Maximum Amps (A)	Inductance (uH)	Weight (LBS)	Losses (W)
KDRULA1P	2	3.4	4	3190	4	9
KDRULA2P	3	4.8	6	1700	4	9
KDRULA3P	5	7.6	8	1410	4	14
KDRULA4P	7 1/2	11	12	863	5	20

575 Rated Voltage, 600 Max Voltage, Output

Part Number	Horsepower (HP)	Motor Amps (A)	Maximum Amps (A)	Inductance (uH)	Weight (LBS)	Losses (W)
KDRULA31P	2	2.7	4	3370	4	9
KDRULA35P	3	3.9	4	3150	4	9
KDRULA33P	5	6.1	8	1430	4	14
KDRULA34P	7 1/2	9	12	991	5	20
KDRULA36P	10	11	12	936	5	20



TGI (800) 824-8282 transcoil.com

TGI, LLC
Germantown, WI, USA
transcoil.com
800-824-8282

KDRUL Drive Reactor
KDRUL Motor Amps ---
208V, 480V --- 1/2 Rated, 600V Max, -A Max
480C Amps Max, 120C Max, Full S
Term Torque --- 10-14

UL Listed CE

DATE CODE

- Notes:
- UL file number: cULus Listed File E116124.
 - KDR Drive Reactors Comply With The Thermal and Altitude Standards Set Forth by NEMA ST20-1992.
 - KDR IOM Manual Part Number 30895
 - NEC Current For 208/240 Volts, Horsepower Based On 208 Volts.
 - Material(s) Shall be RoHS Compliant
 - Customer Is Responsible For Installation To Meet All National And Local Electrical Codes.

TGI, LLC CLAIMS PROPRIETARY RIGHTS IN THE MATERIAL HEREIN DISCLOSED. IT IS SUPPLIED WITHOUT PREJUDICE TO ANY PATENT RIGHTS OF TGI AND MAY NOT BE REPRODUCED OR USED TO MANUFACTURE ANYTHING SHOWN THEREIN WITHOUT WRITTEN PERMISSION FROM TGI.

NO	REVISION	DATE	BY
A	Combined Drawings	1/22/18	DSW

TOLERANCES (EXCEPT AS NOTED)
DECIMAL
XX ± .25
.XXX ± .10
FRACTIONAL
± 1/16
ANGULAR
± 1°

TGI W132 N10611 Grant Drive
Germantown, WI 53022

KDRUL A Frame, Terminal Block
Reactor Drawing

DRN BY: DSW DATE: 1/22/18 107423DG
SCALE: 1:1 APRVD: SIZE: C
SHT 2 OF 2